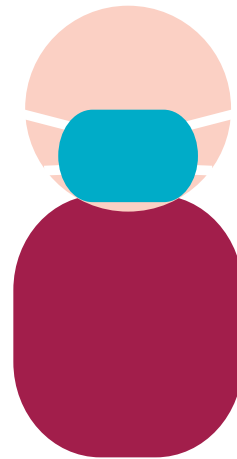




SKG
RADIOLOGY

SKG Radiology adheres to the COVID-19 guidelines as provided by the relevant Government health authorities.



Please keep your ServiceWA or SafeWA check-in visible for staff to check at reception. Masks must be worn.

You will be asked questions regarding possible COVID-19 symptoms and exposure, vaccination status and mask exemption.

Violent and aggressive behaviour will not be tolerated. Persons unwilling to follow these guidelines will be refused service and asked to leave our premises.

Thank you for your co-operation.