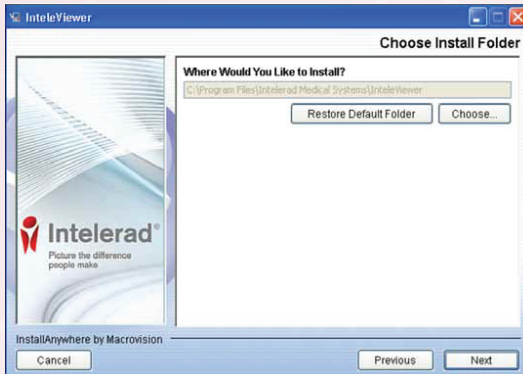


TO INSTALL INTEVIEWER FOR WINDOWS

Launch IntelViewer Installer (with the appropriate 32 bit, 64 bit).

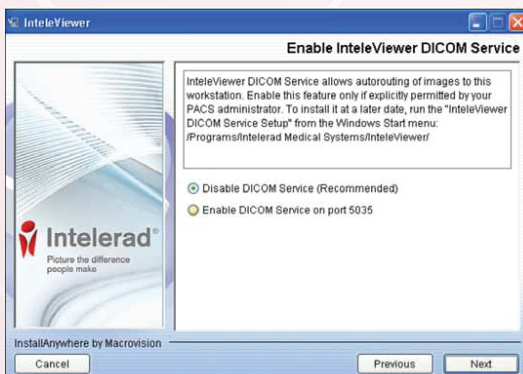


By default, the application will be installed in C:\Program Files\Intelrad Medical Systems\IntelViewer.

Click Next.



Select "All users", click Next.



Choose "Disable DICOM Service (Recommended)".

Click Next. Click Install.

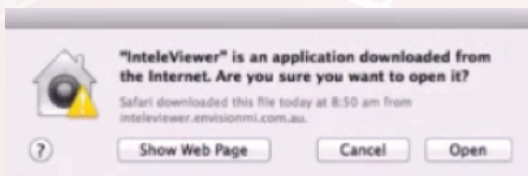
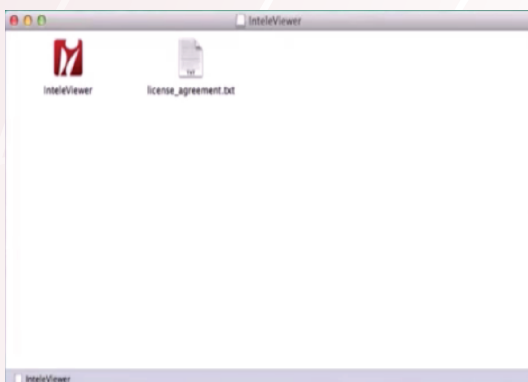
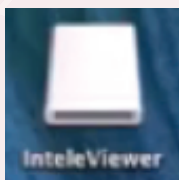
TO INSTALL INTELEVIEWER FOR MAC

Ensure Java Legacy is up to date https://support.apple.com/kb/DL1572?locale=en_AU.

Download Mac Installer.

Open IntelViewer drive which contains the IntelViewer application.

Drag IntelViewer application to the Applications folder.



TO SET UP SKG CONNECT AS A BOOKMARK IN INTEVIEWER



Enter "Server URL" as <https://skgconnect.com.au>.

Tick "Use Custom Server Name" and enter "SKG Connect" as "Name".

Click Ok, then Close.

